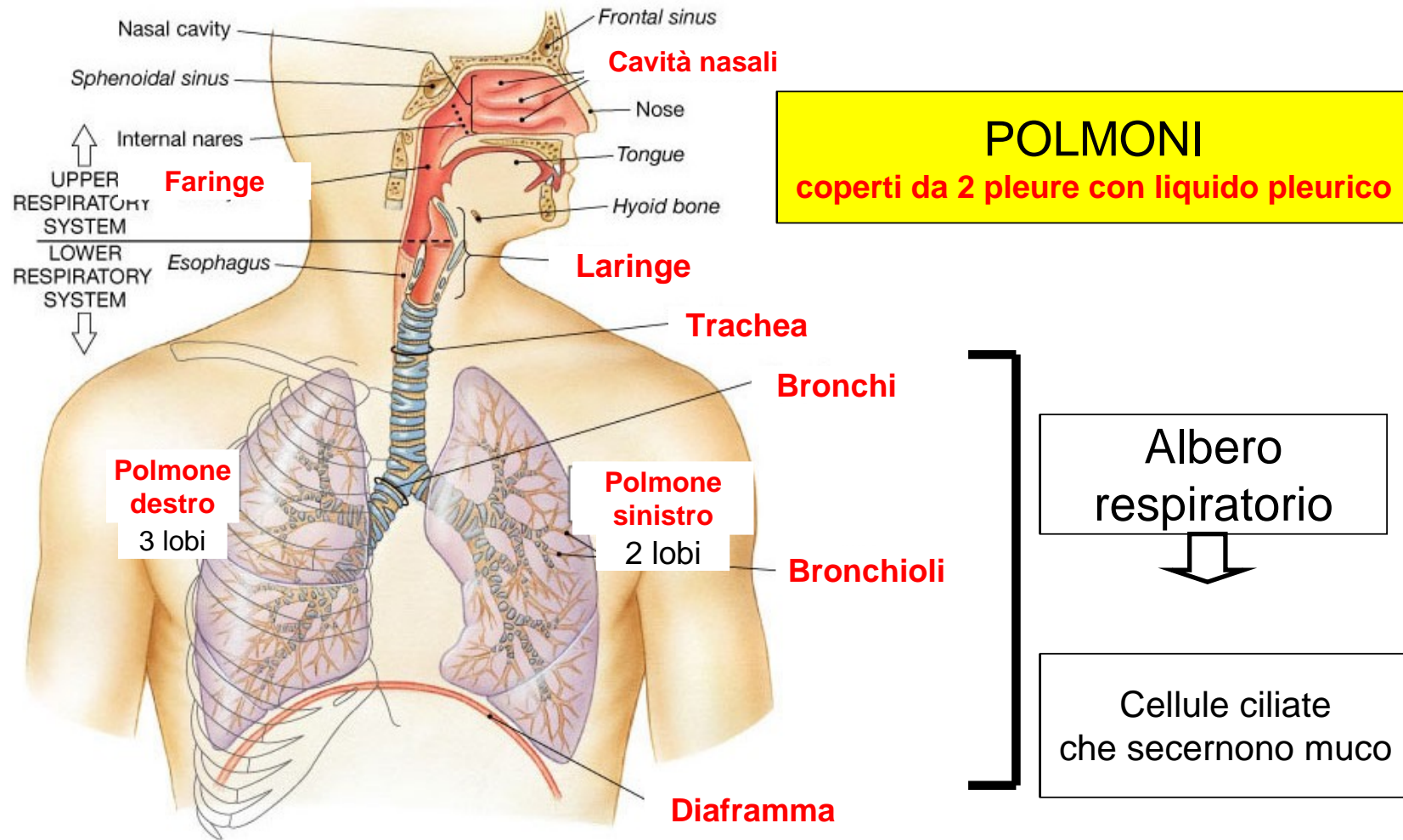
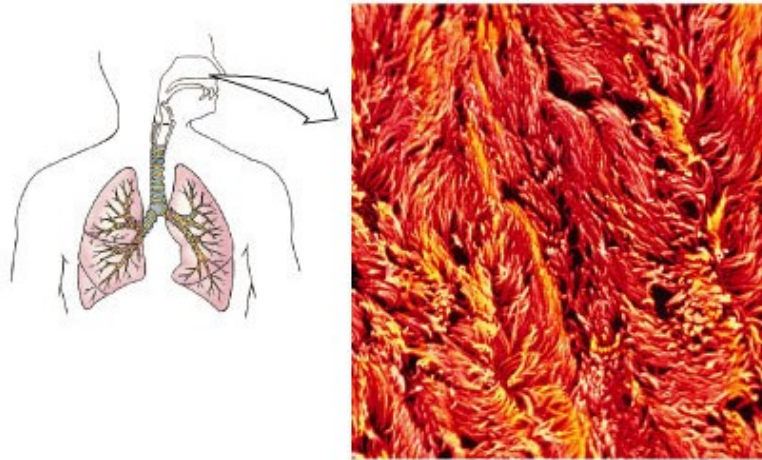


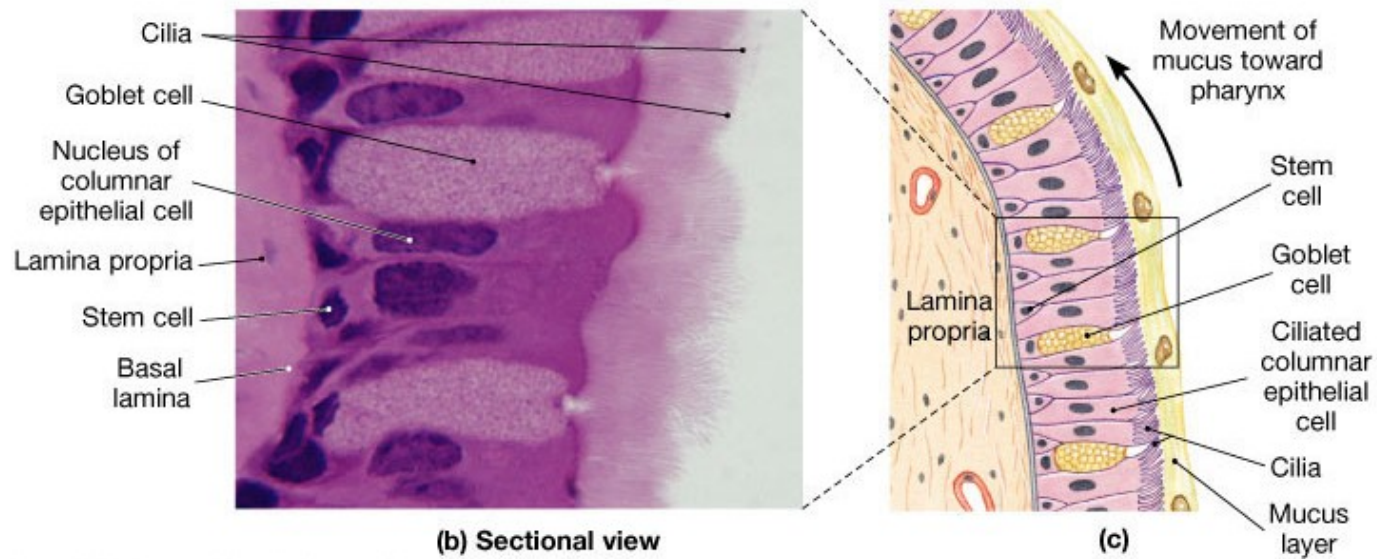
# Organi dell'apparato respiratorio



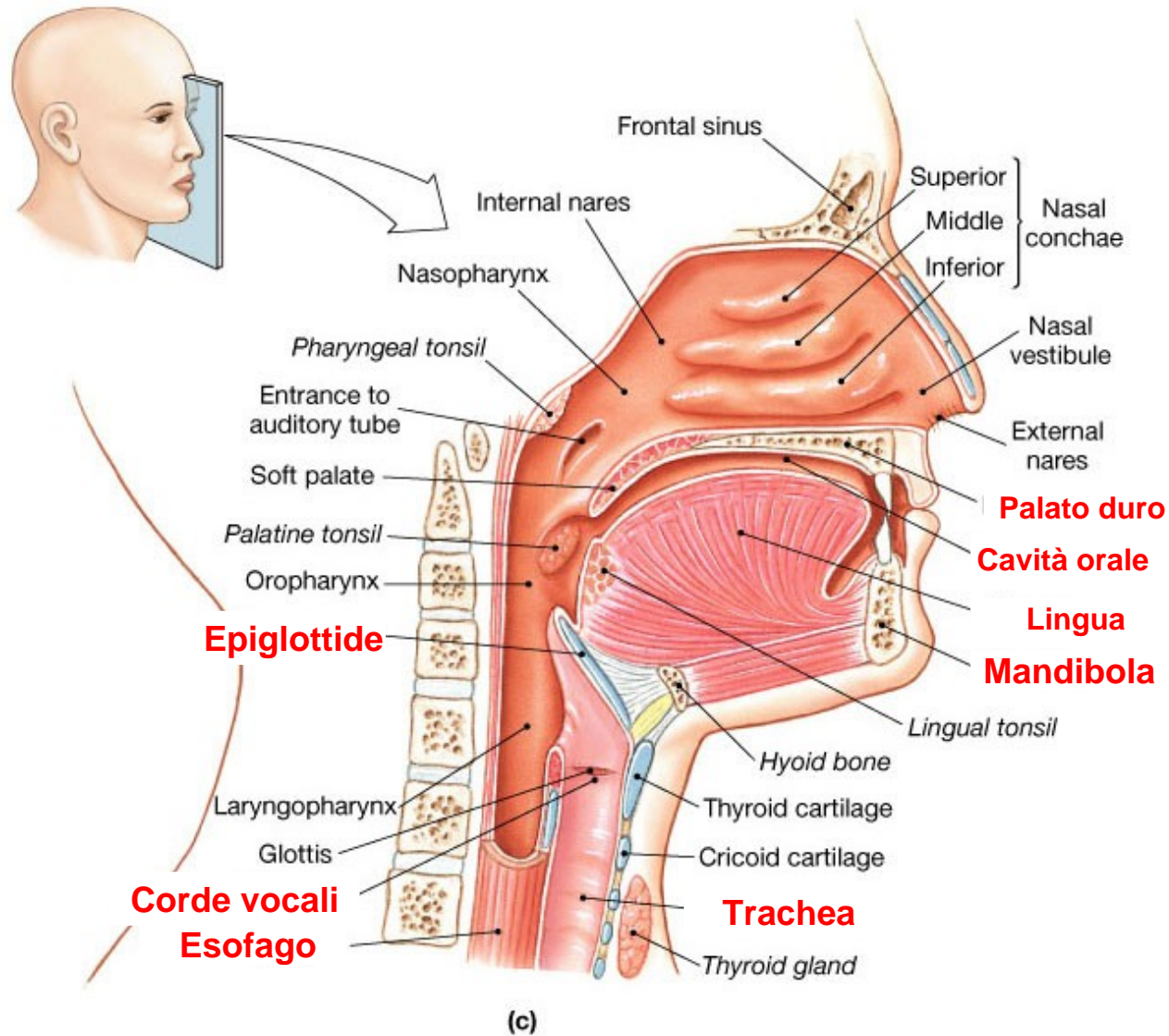
# L'epitelio respiratorio



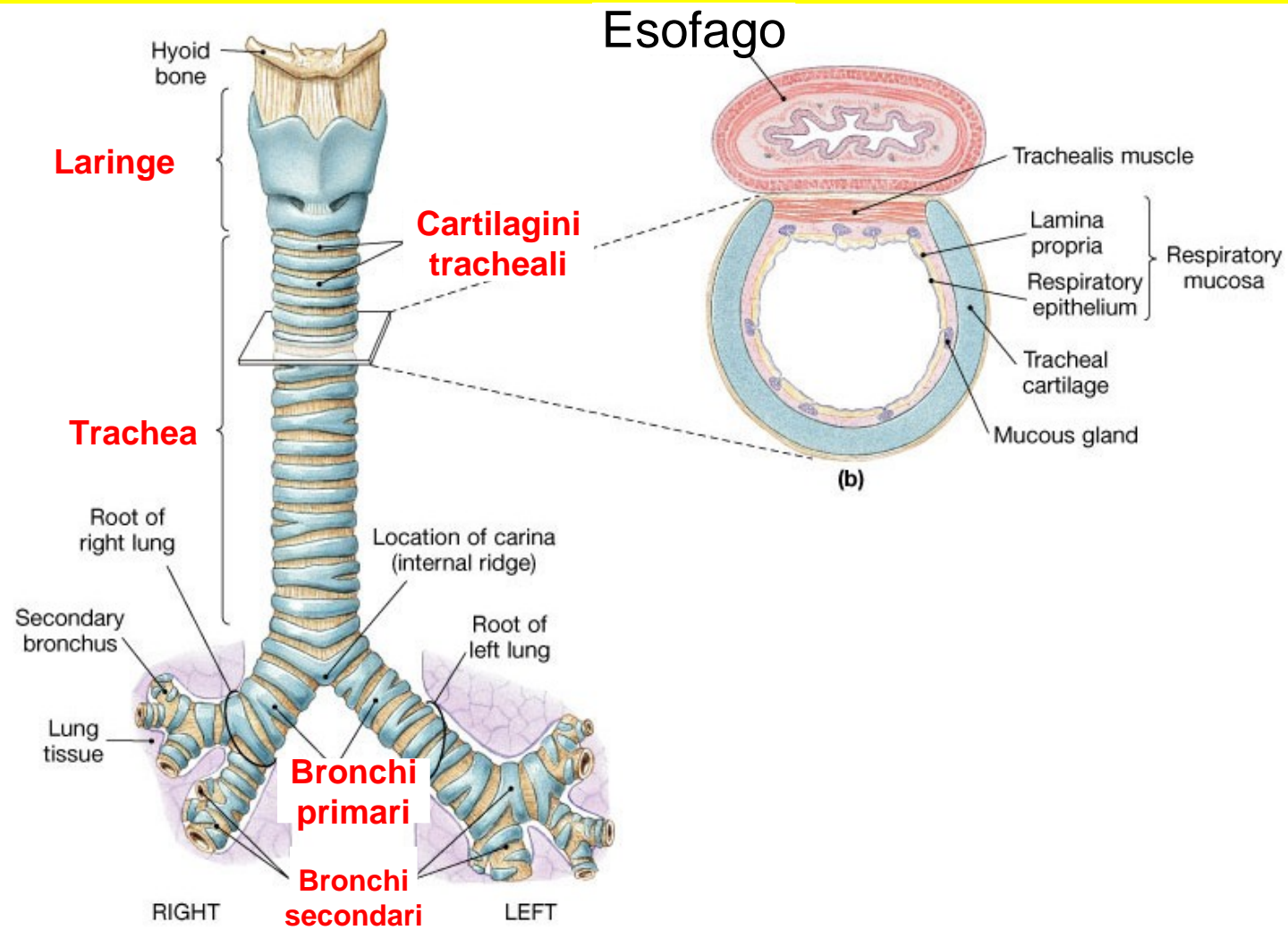
Visione superficiale



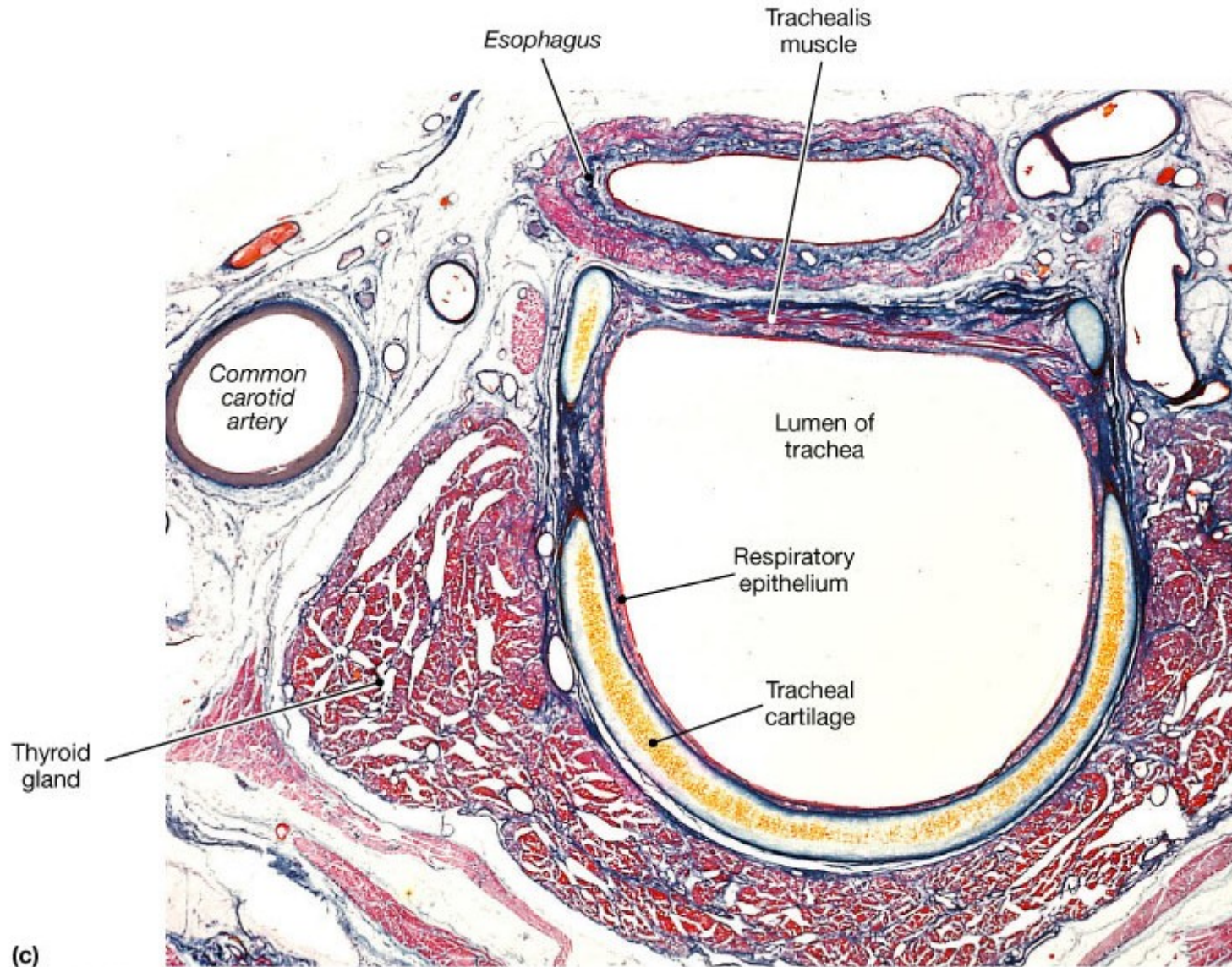
# Il naso, le cavità nasali, la faringe



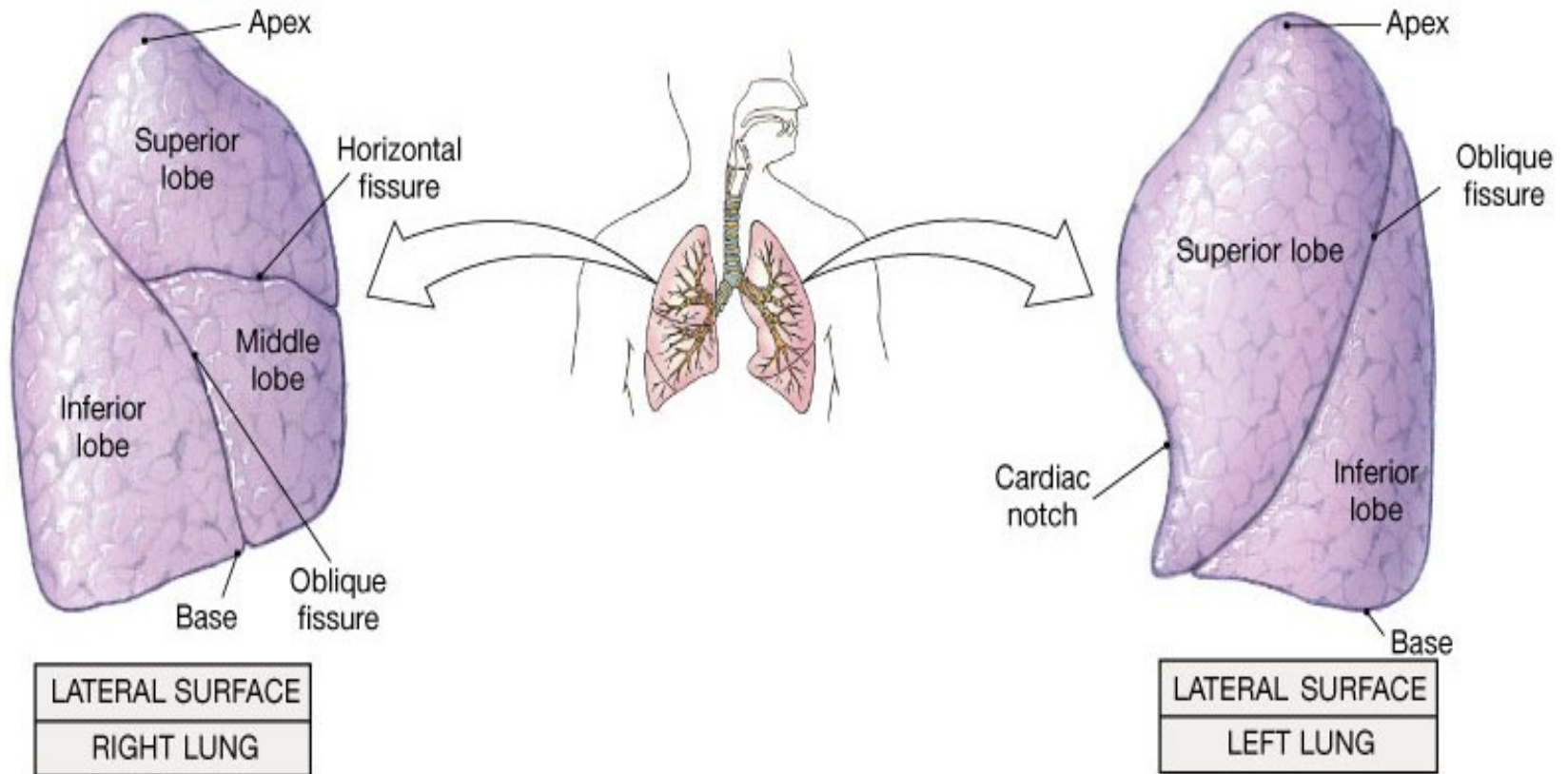
# La Trachea



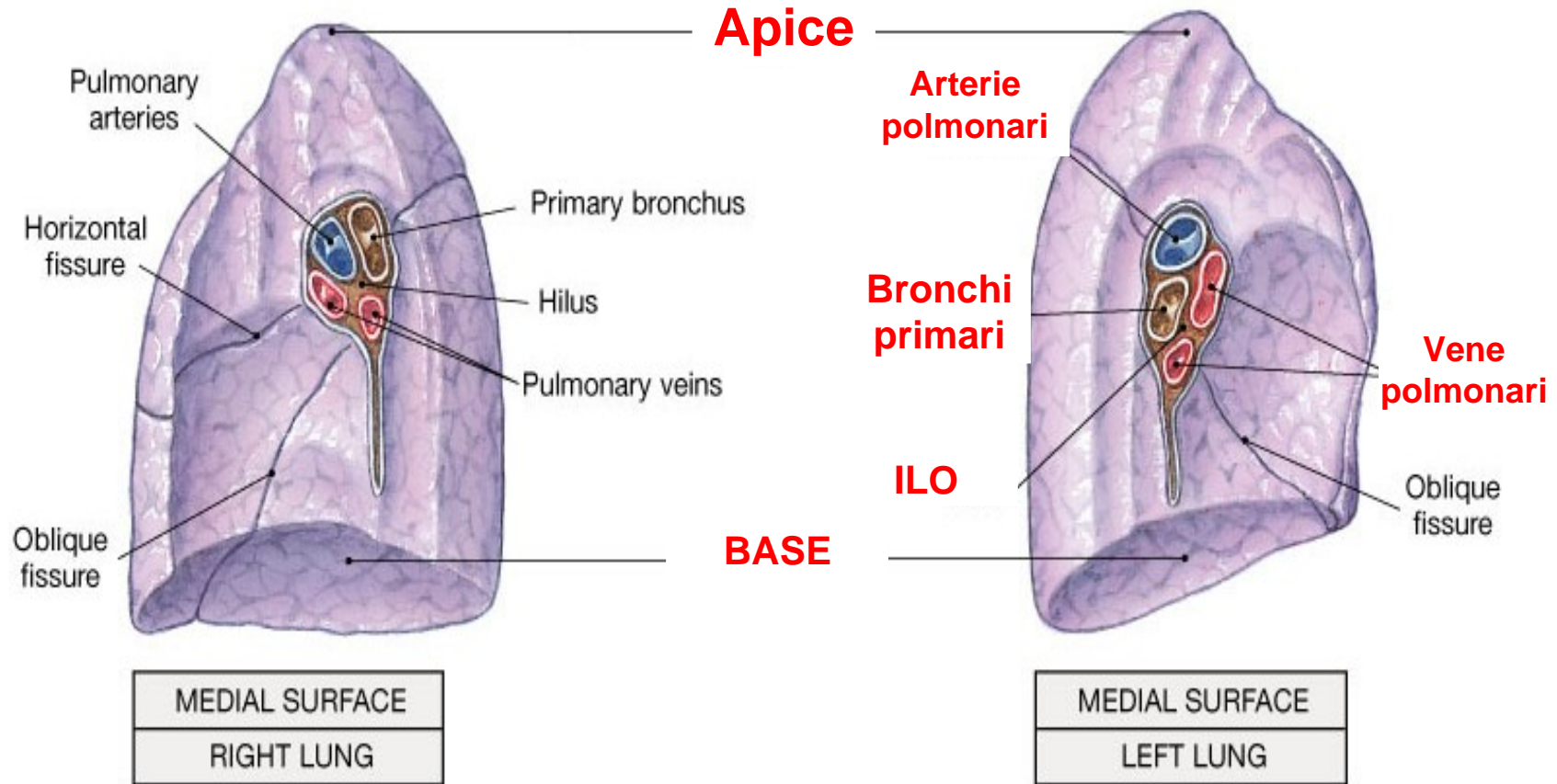
# Anatomia della trachea



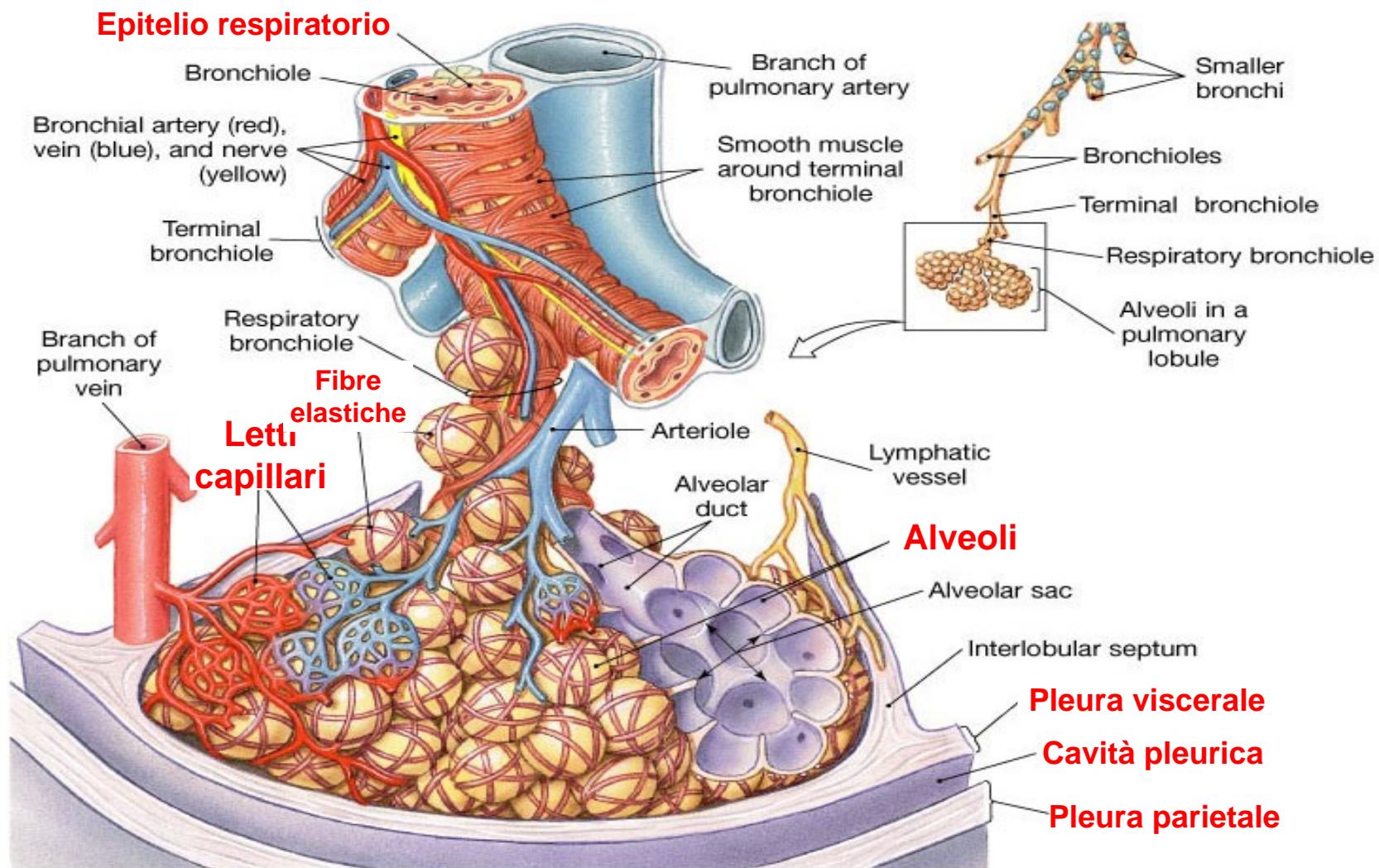
# Polmoni



# Polmoni

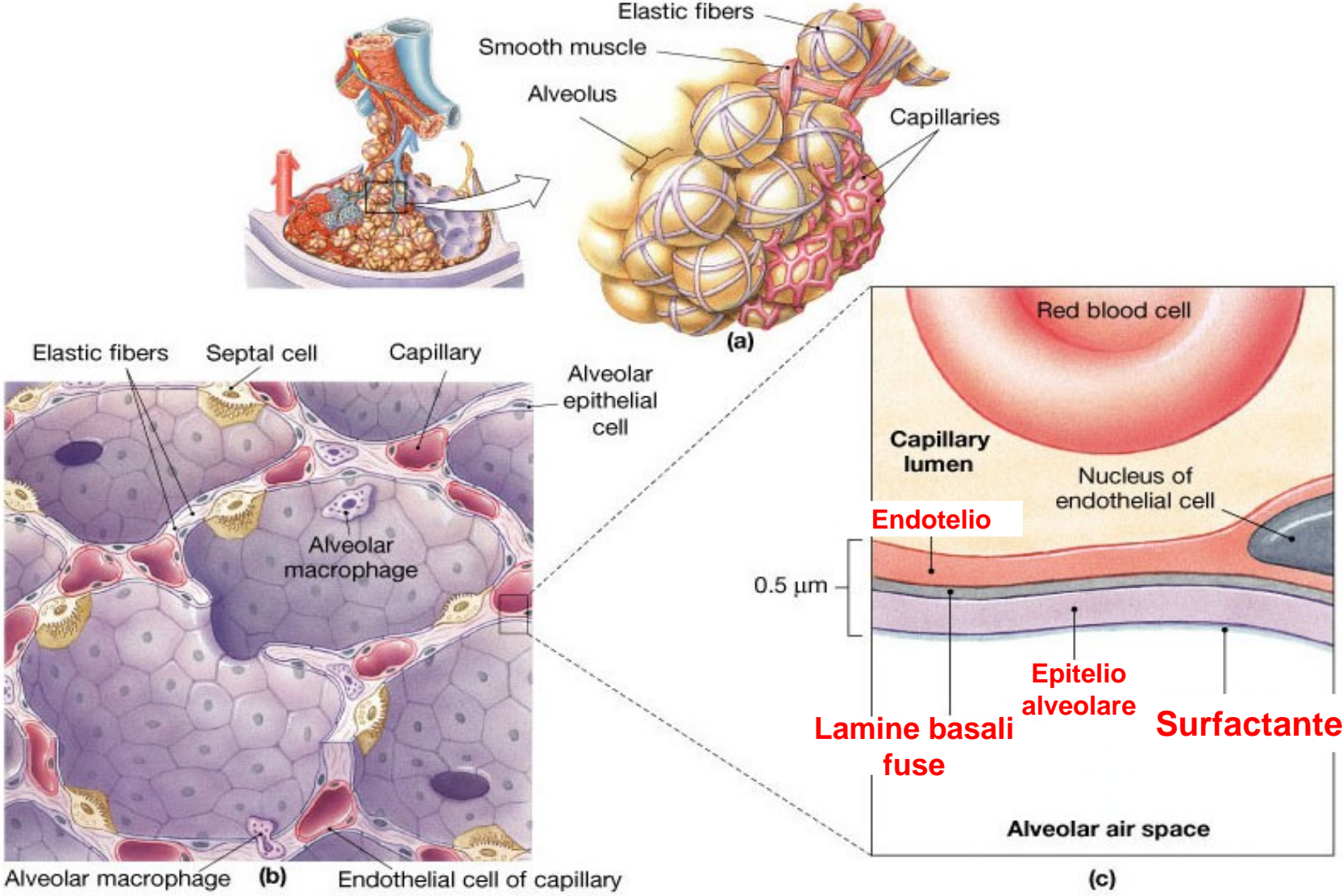


# Il Lobulo polmonare



(b)

# Epitelio alveolare

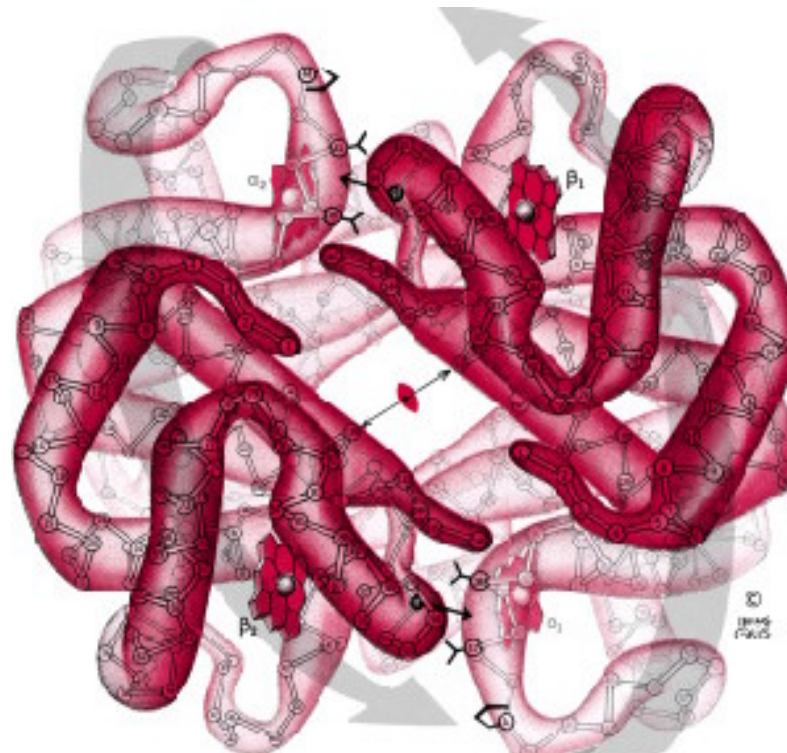


# Meccanismo della respirazione



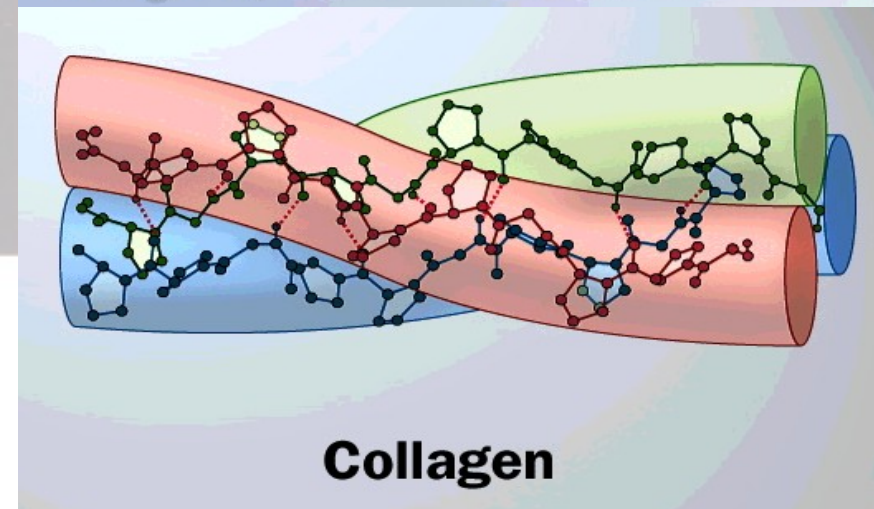
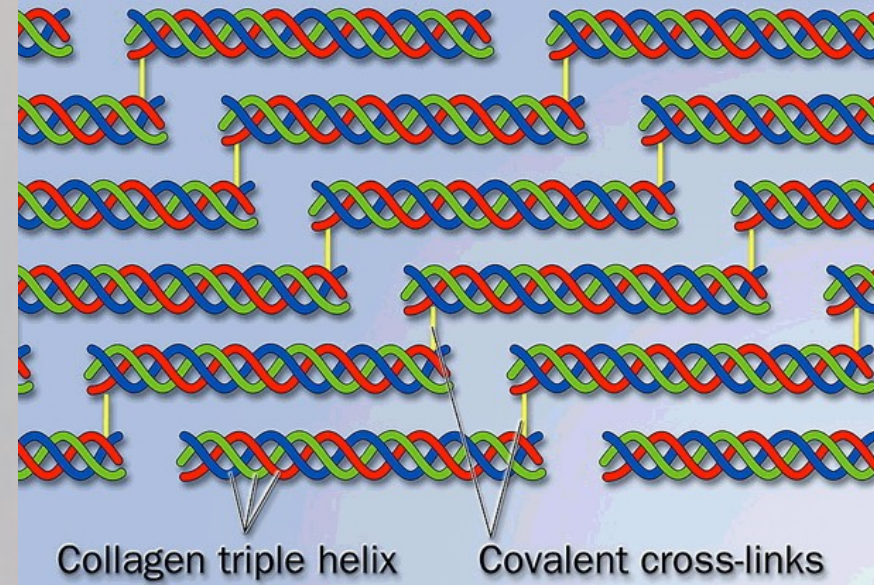
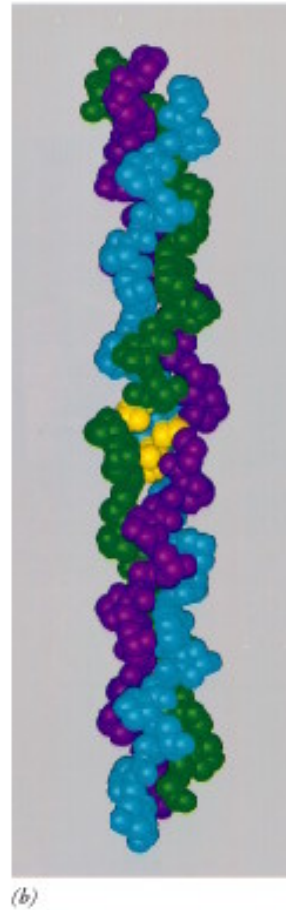
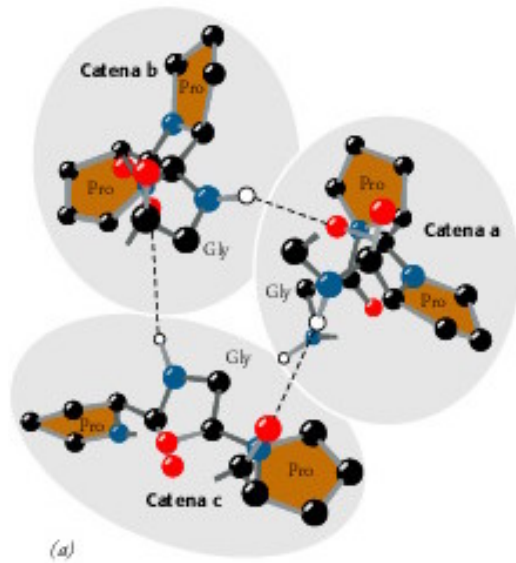
# Trasporto del gas

## EMOGLOBINA



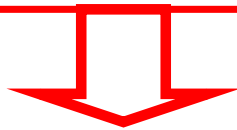
Una proteina globulare

# Proteine fibrose



# TRASPORTO GAS

Respirazione  
cellulare



$\text{CO}_2$

10% in soluzione nel plasma

20% si lega all'emoglobina

70% reagisce con l'acqua dei globuli rossi a formare acido carbonico

$(\text{H}_2\text{CO}_3)$



Negli alveoli si dissocia in  $\text{H}_2\text{O}$  e  $\text{CO}_2$  che esce con l'espiazione

# Il controllo della respirazione



Impossibile trattenere il respiro - Aumenta l'anidride carbonica: controllo involontario